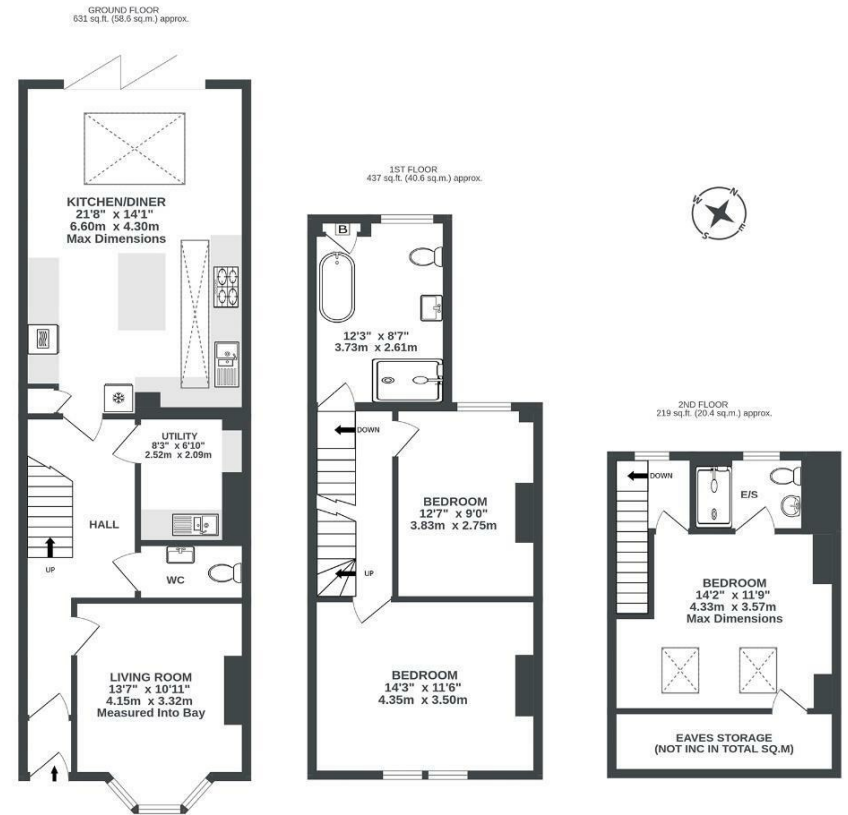


Boardwalk

# Ruby Street , BRISTOL

## Ruby Street BEDMINSTER

APPROXIMATE FLOOR AREA  
119.6 SQM / 1287 SQFT



Illustrations are for reference purposes only, measurements are approximate, not to scale.

Boardwalk

# Ruby Street , BRISTOL

£

£600,000



BS3 3DY

zzz

3 Bedrooms



2 Bathrooms

*"Ruby Street has been a wonderful home for us, one we've thoughtfully extended and renovated over the years. Our favourite room is the kitchen — a space where we've spent countless hours cooking, chatting with family and friends, and even the occasional game of table tennis around the island. We love the outside in feel we get with the garden, rooflights and the bifold doors. It has become the perfect first family home, with friendly neighbours and nearby shops and parks ideal for young children."*

